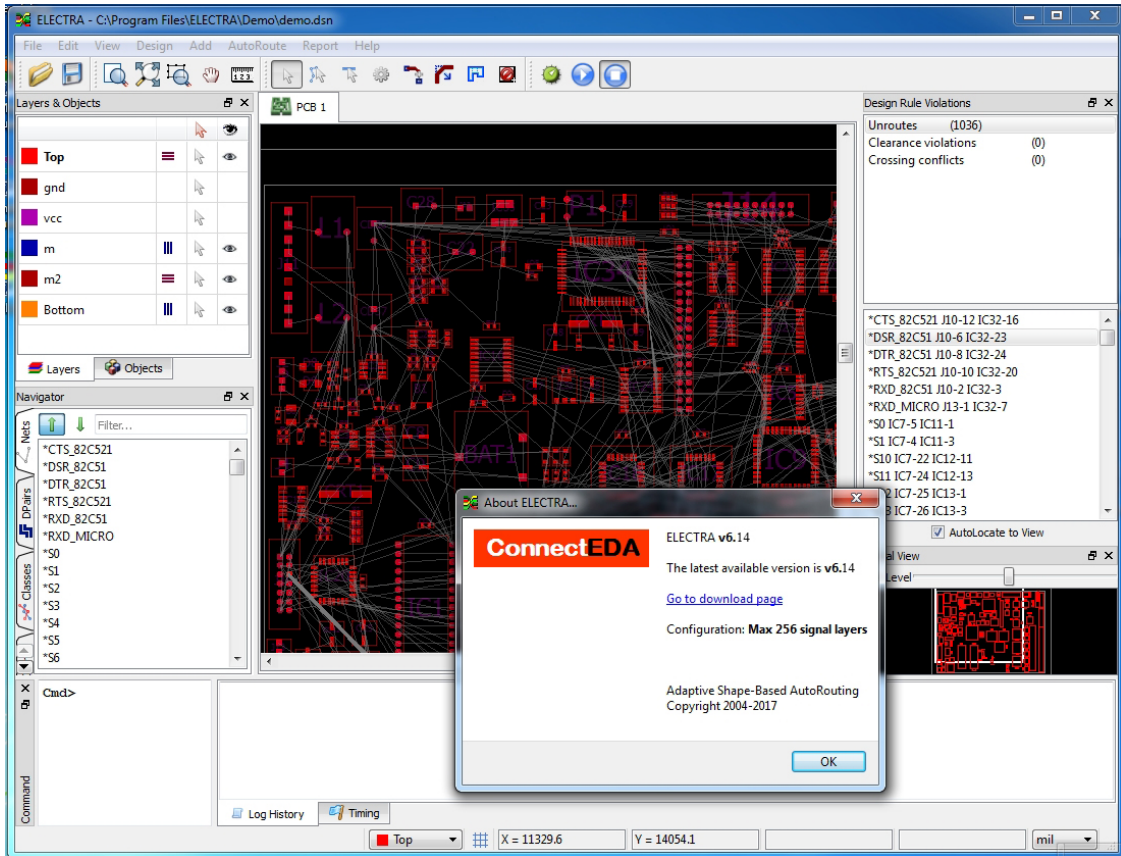


mine ventilation gb mishra pdf download



DOWNLOAD: <https://tinurli.com/2iqr7y>



depositphotos

Image ID: 21142726 www.depositphotos.com

I am using GPS System to record the coordinates of the excavations and the total working time at a single point. Total working time is showing when I am checking the job. But my client is complaining that the total time is not properly showing and he wants to be able to check that and send a complaint to the local inspector. So, I have gone through his problem that he is not able to show the total time that the job was being carried out in proper manner. He wants to make a complaint. "The preparation of health/environmental impact studies. Regulatory requirements and environmental protection and control. Occupational health and safety planning and practice. This course is ideal for anyone who needs to understand and apply environmental health and safety concepts and practices. It provides a firm foundation in the basics of risk assessment and the assessment of environmental effects on human health and the environment. It also examines contemporary issues of health and safety in the workplace. The Fundamentals of Health and Safety (FOSH) courses cover the legal and practical requirements to perform hazard identification and risk assessment, conducting workplace inspections, reporting and ensuring compliance with regulations and standards. The course also provides for the protection of workers and other people who may be exposed to dangerous agents in the workplace. In addition, it covers the concepts of Occupational Injury and Illness, in particular related to ergonomics and Health and Safety management systems. EBA-1169 - Fundamentals of Health and Safety (FOSH) The Fundamentals of Health and Safety (FOSH) courses cover the legal and practical requirements to perform hazard identification and risk assessment, conducting workplace inspections, reporting and ensuring compliance with regulations and standards. As our customers we will provide you with the support and services you require, and we want to earn your continued business. "MINE ENVIRONMENT AND VENTILATION" by Misra G B. The University of Alabama recently announced that the school will seek to construct a new law school. University of Alabama President 82157476af

Related links:

[Gijom Muso Pdf Knjige Download](#)
[Descargardrivercanonimagerunner1310](#)
[Mutekki Media Ultimate Beats Vol 1 WAV](#)